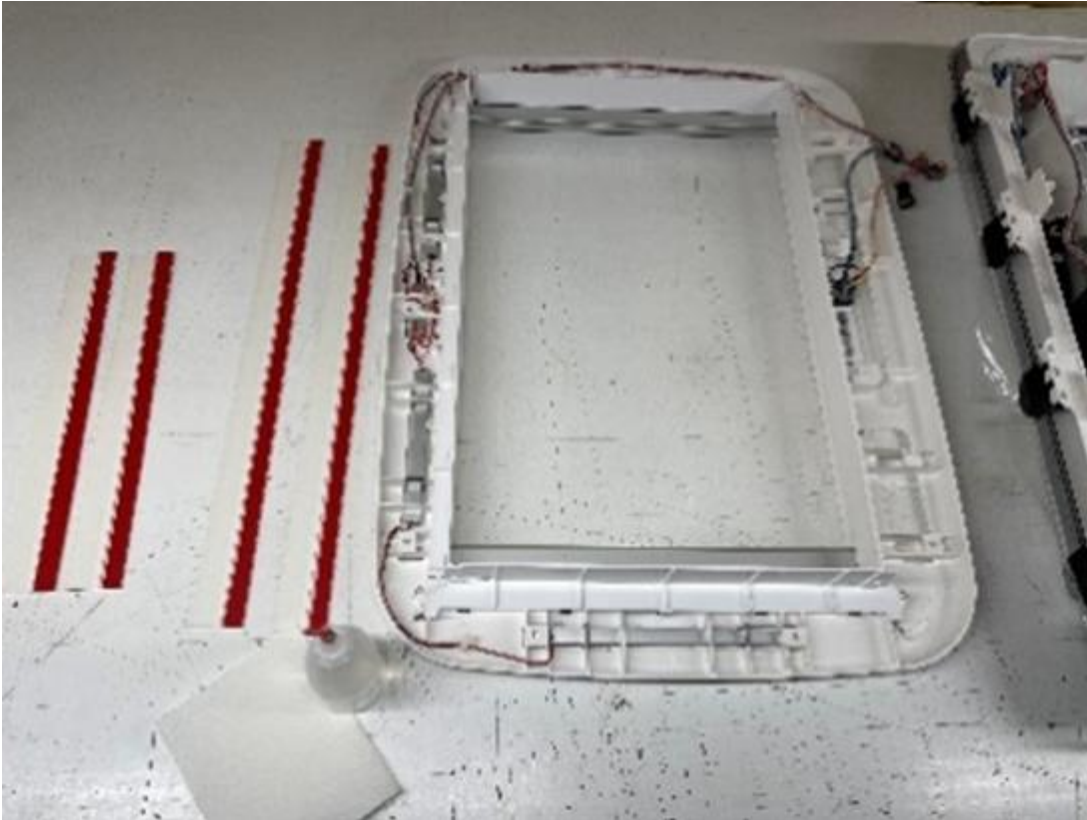


## Arctic Tern Roof Hatch Expansion Ring Installation Instructions

**Step 1:** Place the ceiling-mounted trim panel face down on a table with a protected surface.



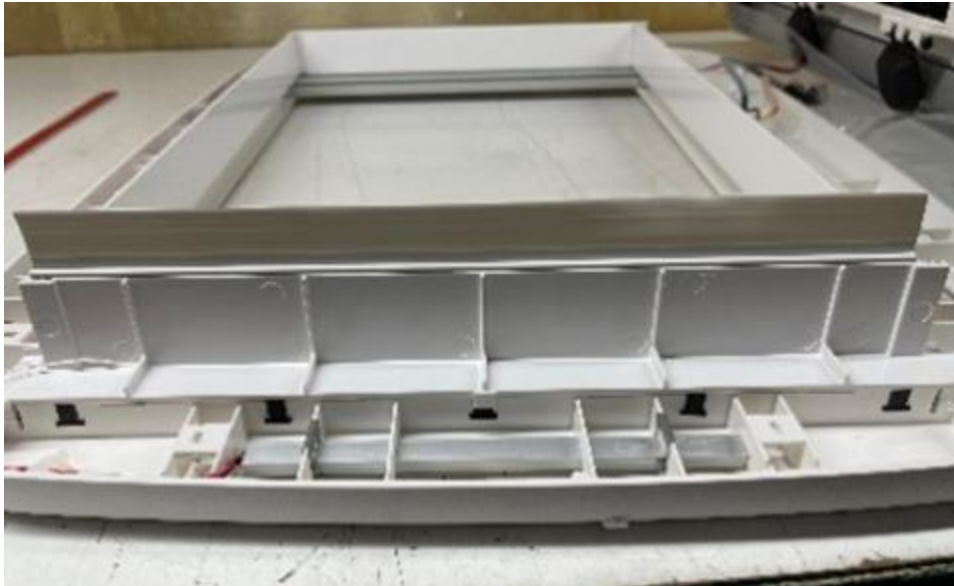
**Step 2:** Prior to removing the red tape, test fit the trim pieces.



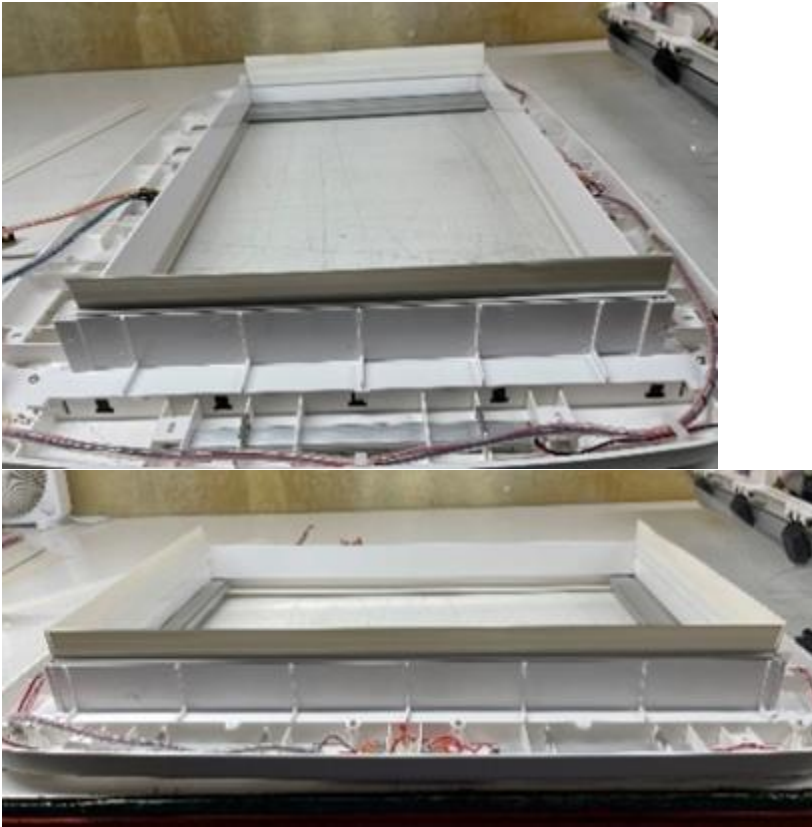
After verifying fitment, clean the mating surfaces using isopropyl alcohol.

**Step 3: IMPORTANT:** The short sections of material **must** be installed prior to the long sections of material.

Remove the red tape from one of the shorter sections, exposing the adhesive. Carefully attach the short strip onto the bezel, ensuring the lip on the expansion ring is properly aligned with the top surface of the bezel. Repeat this process for the other short side of the ceiling trim panel.



**Step 4:** Once the two short sides are installed, repeat the same steps for the two long sides.



**Step 5:** Firmly press the expansion ring strips into place to ensure they are fully seated and adhered.

Installation is complete and the ceiling-mounted trim panel may be reinstalled.